

3 DAYS Faculty Development programme

on

Analysis and design of structural components by using staad. Pro, e-tabs, safe and staad foundation softwares

SEPTEMBER **14 to 16** EVERYDAY
@10AM - 12 PM



SPEAKER

Mr. N. LINGESHWARAN, M.E.(Ph.D)

Assistant Professor,
K L University, Guntur,
Andhrapradesh.

Join us on

GOOGLE MEET LINK

<https://meet.google.com/yan-yyhx-uvb>

Convenor

Dr. N. BALASUNDARAM

Hod & Professor
Civil Department, KAHE.

Faculty Coordinator

Mrs. S. PRATHEBA

Assistant Professor,
Civil Department, KAHE.

Organizes by

FACULTY OF ENGINEERING | DEPARTMENT OF CIVIL ENGINEERING

Report

Report of FDP on “Analysis & Design of structural components by using Staad.pro, E-Tabs, Safe and Staad Foundation softwares” on (14.09.2020 - 16.09.2020) at KAHE Campus.

As per the initiative of IIC-KAHE, the department of civil engineering has organized a **FDP on “Analysis & Design of structural components by using Staad.pro, E-Tabs, Safe and Staad Foundation softwares” on (14.09.2020 - 16.09.2020)** at KAHE Campus. **Mrs.S.Pratheba AP/CIVIL/KAHE** was assigned as organizing secretary; and the Convenor of this program was Dr. N. Balasundaram, HOD & Professor, Civil Department, KAHE and Dr. M. Natarajan, Professor, Civil Department, KAHE.

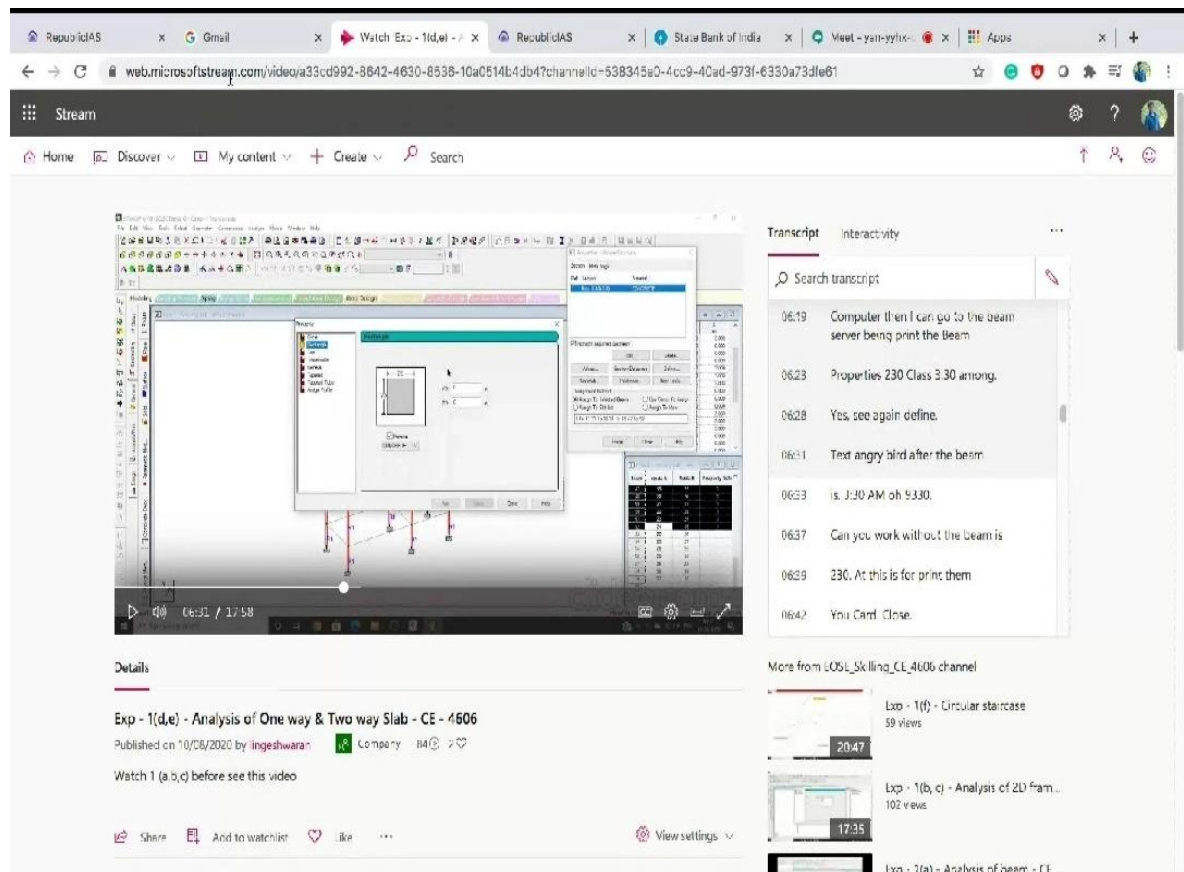
Dr.N.Lingeshwaran, Assistant Professor, K L University, Guntur, Andhrapradesh was the resource person for the event. KAHE (Faculty members of our college and other colleges) students were given idea on the structural components by using Staad.Pro, E-Tabs, Safe and Staad Foundation Softwares to be followed through this program. It was an eye opener session for the students. Totally 59 faculties of Department of Civil Engineering and other colleges, KAHE have been benefited by participating in the event.

Session Details:

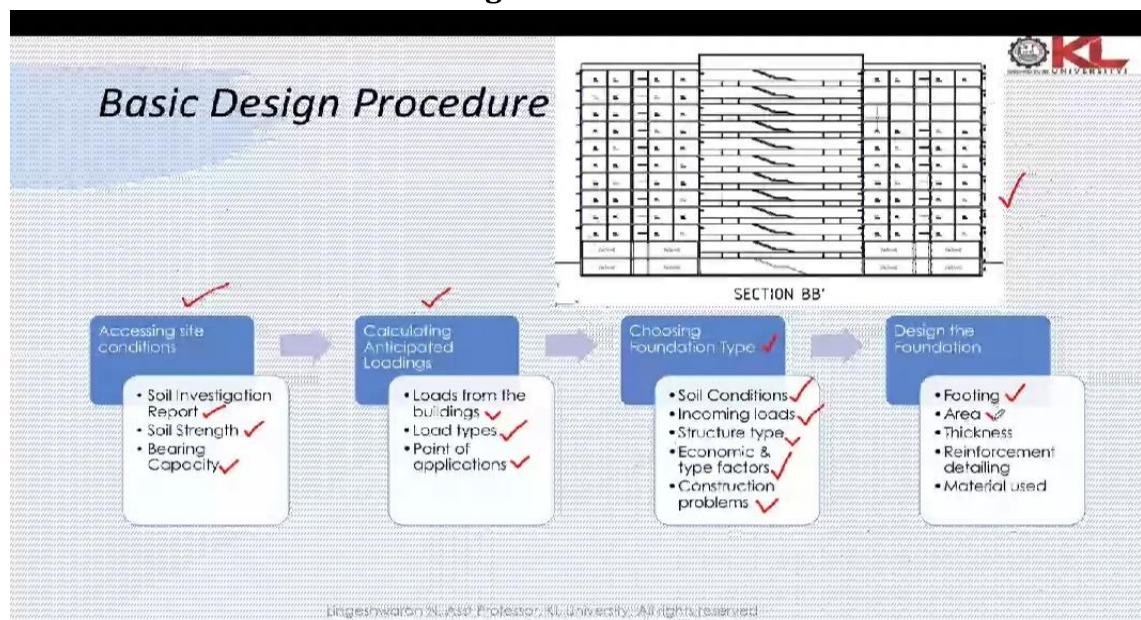
The resource person shared the key points on the different software based on project methodologies

The key points were discussed in the program as follows

1. Load Pattern, Load cases, Moment, shear
2. Soil Properties assign to MAT
3. Crack width and Estimation
4. Rebar



FDP on “Analysis & Design of structural components by using Staad.pro, E-Tabs, Safe and Staad Foundation Softwares” on (14.09.2020 -16.09.2020) via Google Meet.



Mr.N.Lingeshwaran M.E(Ph.D), Assistant Professor, K L University, Guntur, Andhrapradesh delivering Lecture to Participants of FDP on “Analysis & Design of structural components by using Staad.pro, E-Tabs, Safe and Staad Foundation softwares” via Google Meet.